

About ATTO

For over 30 years, ATTO Technology, Inc. has been a global leader across the IT and media & entertainment markets, specializing in network and storage connectivity and infrastructure solutions for the most data-intensive computing environments. ATTO works with partners to deliver end-to-end solutions to better store, manage and deliver data. Working as an extension of customer's design teams, ATTO manufactures host bus adapters, network adapters, protocol bridges, Thunderbolt™ adapters, and software. ATTO solutions provide high level connectivity to all storage interfaces, including Fibre Channel, SAS/SATA, iSCSI, Ethernet, NVMe, NVMe over Fabrics and Thunderbolt. ATTO is the Power Behind the Storage.

All trademarks, trade names, service marks and logos referenced herein belong to their respective companies.

How to buy

Available through Dell S&P

ATTO SKU	DELL SKU
----------	----------

XstreamCORE 8200	
-------------------------	--

XCET-8200-TP2	AA777594
---------------	----------

Cables	
---------------	--

CBL-8079-EX1 (1M)	AA837909
-------------------	----------

CBL-8078-EX1 (3M)	AA837910
-------------------	----------

Dell Sales	+1.800.456.3355
-------------------	-----------------

ATTO Sales	+1.716.691.1999
-------------------	-----------------

Add Ethernet Connectivity to Dell EMC PowerVault ML3 SAS Libraries

XstreamCORE® Protocol Bridges add 40Gb Ethernet to SAS LTO Tape Drives

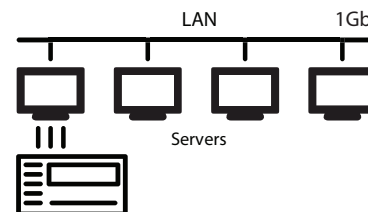
Dell EMC and ATTO Tape Solution

Dell EMC and ATTO provide the industry's only commercially available solution to add high speed Ethernet connectivity to standard SAS LTO tape drives. ATTO XstreamCORE® ET 8200 protocol bridges allow you to remotely connect to SAS tape drives over standard Ethernet networks using iSCSI and iSER protocols. When combined with Dell EMC PowerVault ML3 scalable tape libraries, which feature the latest LTO technology, users have a solution that provides Ethernet connected LTO tape for open-compute, cloud-based and hyperscale environments.

ATTO XstreamCORE® ET 8200 adds Ethernet to SAS Tape Drives

ATTO XstreamCORE is a high-performance protocol bridge that adds shared storage benefits to SAS storage at direct attached speeds. XstreamCORE provides remote access to SAS storage, enabling the movement of tape storage away from computer resources via Ethernet. Optimized for high performance with multiple hardware acceleration engines, XstreamCORE provides industry-leading performance to up to 64 servers.

From this...

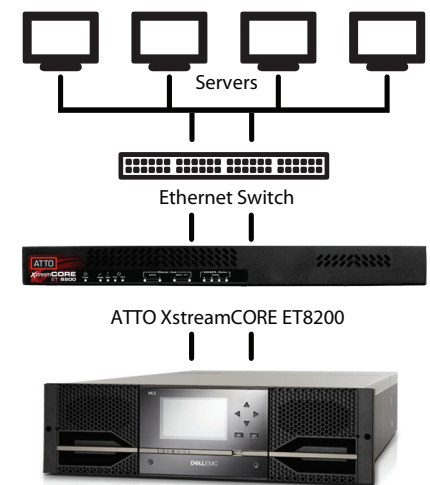


SAS Tape Library

ATTO XstreamCORE connects to LTO SAS tape drives and converts them to Ethernet connected LTO drives allowing all servers to have connectivity over distance using existing resources.

- No single points of failure
- No congested LAN

To this!



Dell EMC PowerVault ML3 Tape Library

Dell EMC PowerVault ML3/ML3E Tape Library

Dell EMC PowerVault ML3 Tape Library offers scalability above and beyond traditional tape solutions so that you can grow your data environment. With a media life span of 30 years, you can rely on Dell EMC PowerVault ML3 tape solutions to provide your company with secure back-up. There's no beating the TCO of tape technology, and with Dell EMC PowerVault ML3, you get the assurance your company is backed by a trusted brand with top of the line technology.

ATTO SpeedWrite™ boosts tape write performance

When backing up data, write speed is the most important metric to an organization. ATTO SpeedWrite™ keeps paths between attached hosts and ATTO XstreamCORE protocol bridge filled with data to significantly boost write performance to Dell EMC PowerVault ML3 tape libraries. Multiple hosts can each communicate to different tape drives while all hosts benefit from SpeedWrite early response mechanism. SpeedWrite boosts tape performance by up to 25% over a direct connect SAS HBA connection to tape drives. SpeedWrite gives a successful response to the host in parallel with sending commands to the drive. Hosts can send the next command down to XstreamCORE, making the system look like tape devices can handle a queue depth of two.

Features	Dell EMC PowerVault ML3 Tape Library and ML3E Tape Expansion Tech Specs
Scalability	Up to 480TB (native) for ML3 and 480TB (native) for ML3E
Drive Type	LTO-6, LTO-7, LTO-8
Number of Cartridges	40 (ML3); 40 (ML3E); Maximum of 280 with six expansion modules
Import/Export Slots	5
Form Factor	3U
Chassis	Tabletop or rackmount
Media	LTO-6, LTO-6 WORM, LTO-7 Type M, LTO-7, LTO-7 WORM, LTO-8, LTO-8 WORM
Max Native Capacity	ML3: Up to 480TB ML3E: Up to 480TB Maximum of 3264TB (base and six expansion)
Max Native Backup Rate per Half Height Drive	LTO-6: 160MB/s, 576GB/hour; LTO-7: 300MB/s, 1080GB/hour; LTO-8: 300MB/s, 1080GB/hour
Interface	6Gb SAS
Software Supported	For tape backup software, refer to the vendor site for support
Library Managed Encryption	Activation license included standard Support for host Application Managed Encryption (AME) and Library Managed Encryption (LME)
Available Services	Limited Warranty , 30-Day Getting Started Phone Support , E-support, and Next Business Day On-Site Service

Features	ATTO XstreamCORE® ET 8200T High-Performance Protocol Bridge Tech Specs
Input Connectors	Two 40Gb Ethernet
Output Connectors	Four 12Gb (x4) SAS
Protocols Supported	iSCSI; iSCSI extensions for RDMA (iSER)
SAS Devices Supported	16 (using 4x1 SAS fanout cables) SAS LTO tape drives
Max Performance	6000 MB/s
Form Factor	1U Rackmount
Power Supplies	2 Hot Swap redundant supplies
Warranty	2 year standard warranty; optional advanced replacement and five year warranty available

Dell Tape Libraries

- PowerVault ML3



ATTO XstreamCORE® Protocol Bridge

- ET 8200 40Gb Ethernet to SAS



Benefits

- Lower cost than using Ethernet tape drives
- Same performance as direct-attached SAS - no latency penalties
- Enables shared & distributed backup workflow
- Easy to use - from box to backup in less than 30 minutes
- Fewer fabric switch ports required
- Advanced monitoring and management provided by the controller
- Up to sixteen drives and media changers can directly be connected to the controller
- Easy to configure and maintain

Supported Ethernet Protocols

- iSCSI
- iSER (Linux only)

Supported SAS Tape Drives

- LTO-8
- LTO-7
- LTO-6

Tested Backup Software

- Veritas NetBackup
- Veritas Backup Exec
- Veeam Backup & Replication
- LTF5
- Commvault