



ATTO Technology, Inc.

# ATTO Storage Controllers for Audio

## ATTO's FastStream™ Storage Controller in Audio Production Environments

### Features

#### High Performance RAID Protection

- Specifically designed for audio environments
- Supports RAID levels 0, 1, 4, 5, 6, and ATTO's proprietary DVRAID
- Global and Dedicated hot spare support with automatic rebuild
- Performance up to 1400 MB/sec.

#### First Rate Features

- 4-Gb or 8-Gb Fibre Channel or 6-Gb SAS connectivity to multiple hosts
- Connect storage through 4-Gb Fibre Channel or 3-Gb SAS/SATA
- Simple "one-click" setup and management

#### Return on Investment

- Use existing storage
- Spend less time setting up and managing storage
- Drive failures no longer mean lost work or downtime
- Fibre Channel connectivity for sharing storage and collaborating on projects

### BENEFITS OF RAID PROTECTION

In audio production environments, it is common to find unprotected storage being used for backups. Firewire drives, non-RAID protected SCSI drives and internal ATA drives do not protect data from drive failures, and using these devices require manual backups for adequate data protection. This can result in hours of lost work and lost productivity while the drive is being replaced.

The solution to this problem is RAID protection. In the past, RAID controllers were not fast enough to be used in an audio production environment. ATTO's FastStream™ Storage Controllers provide RAID performance for the most demanding audio projects, while protecting data and allowing for multi-user collaboration. Existing SCSI or Fibre Channel storage can be utilized, saving thousands of dollars by eliminating the need to purchase new storage.

### BUILT FOR AUDIO

The ATTO FastStream™ SC 5500, 7500, 8200 and 8500 were specifically designed for streaming audio and video applications. Capable of sustaining hundreds of tracks of high resolution audio, FastStream also facilitates project collaboration through Fibre Channel connectivity. ATTO's FastStream Storage Controllers provide performance that was once thought impossible.

**FastStream SC in Audio Environments**

- 1 ATTO FastStream™ Storage Controllers allow for a direct connection to two or more hosts with a Fibre Channel switch.
- 2 ATTO FastStream™ Storage Controllers provide high performance RAID protection and are designed for the special demands of digital audio.
- 3 The ATTO FastStream™ SC 5500, 7500, 8200 and 8500 provide a connectivity to SAS and/or SATA storage.
- 4 The ATTO FastStream™ SC 7700 provides a direct connectivity to Fibre Channel storage.



## ATTO FastStream™ SC 7700

### High Performance

- Two independent 4-Gb Fibre Channel ports for host connectivity
- Two independent 4-Gb Fibre Channel ports for storage connectivity
- Features ATTO's intelligent Bridging Architecture™ for optimal performance

### Easy to Use

- Easy web-based administration
- Simple setup and configuration
- RAID migration and storage expansion
- Auto negotiates to 4 / 2 / 1-Gb Fibre Channel



## ATTO FastStream™ SC 5700/7500/8200/8500

### High Performance

- Two or Four independent connectors for host connectivity
- Two independent SAS/SATAT ports for storage connectivity
- Features ATTO's intelligent Bridging Architecture™ for optimal performance

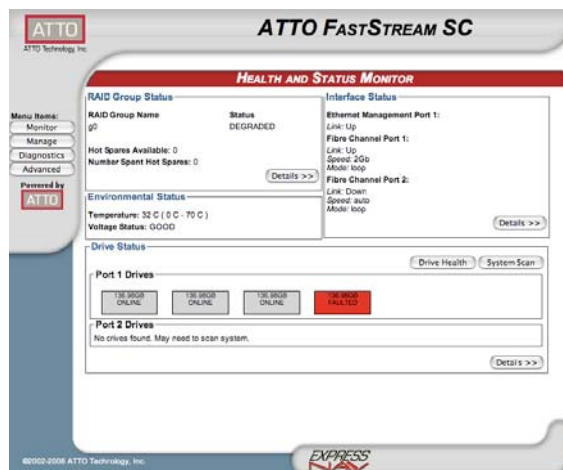
### Easy to Use

- Easy web-based administration
- Simple setup and configuration
- RAID migration and storage expansion
- SCSI Enclosure Services (SES)

## GROUND-BREAKING EASE OF USE

ATTO FastStream™ Storage Controllers are designed to be user-friendly, without sacrificing power or flexibility. Simply connect an optical cable to one of the Fibre Channel ports, then connect the other end to one of the ports on an ATTO Fibre Channel host adapter installed in the editing workstation. Finally, connect either SAS/SATA storage or Fibre Channel storage to the FastStream Storage Controller and use the ATTO ExpressNav™ Storage Manager to quickly locate and manage your storage.

FastStream allows changes from one RAID type to another or adding storage without having to delete data. Simply add new storage and tell the FastStream to grow the partition or change the RAID type. Because there is no need to restore data after this change, valuable production downtime is kept to a minimum.



ATTO's FastStream™ SC 5700 and FastStream™ SC 5300 Storage Controllers provide extensive diagnostic and management tools.

## POWER BEHIND THE STORAGE

ATTO FastStream Storage Controllers easily add RAID protection to existing SCSI or Fibre Channel storage. With high-performance Fibre Channel ports, multiple editing workstations can be connected to allow for easy collaboration and access to projects from any workstation in a studio. Global hot spares mean never having to worry about a drive failure causing loss of data or halting production. With simple RAID migration and partition expansion, RAID levels can be changed or storage can be added without needing to copy data, resulting in minimal downtime. Because existing storage is used, the cost is significantly lowered. ATTO FastStream Storage Controllers provide great protection at a minimal cost

Please visit: <http://www.attotech.com> for more information or to purchase.