



# Parity protection kit for MediaDock

## Installation Guide

ATTO Technology, Inc.

### Verify the contents of your packing box

- ATTO FastStream SC 5300. Note the serial number of your FastStream SC 5300 for later use: \_\_\_\_\_
- Power cord
- Ethernet cable
- RS-232 serial cable
- "L" brackets
- Setup CD including Express Power Center, ExpressStripe, QuickNAV, Benchmark tool, Celerity driver, installation guides and Installation and Operation Manual

### Install the Celerity storage adapter

- 1 Power off your computer and install the ATTO Celerity storage adapter in the bottom PCI-X or PCIe slot of your HP XW Workstation.
- 2 Power up your system.



- 3 Install the Celerity driver by clicking the **setup.exe** file located in the Celerity folder on the included setup CD. Follow the instructions and continue to the next step.



Note  
Windows® users: click **OK** for each warning message box presented.

### Install the FastStream SC 5300

- 1 Place the FastStream SC 5300 on a stable flat surface or install it into a standard 19" rack by attaching the supplied "L" brackets
- 2 Connect the Ethernet port to your network using a Cat 5e Ethernet cable or better.
- 3 Connect your SCSI cables to the MediaDock™ II chassis in single bus mode or split bus mode. See Exhibit 1 and Exhibit 2.

*Exhibit 1 FastStream SC 5300 in single bus attached to MediaDock II units*



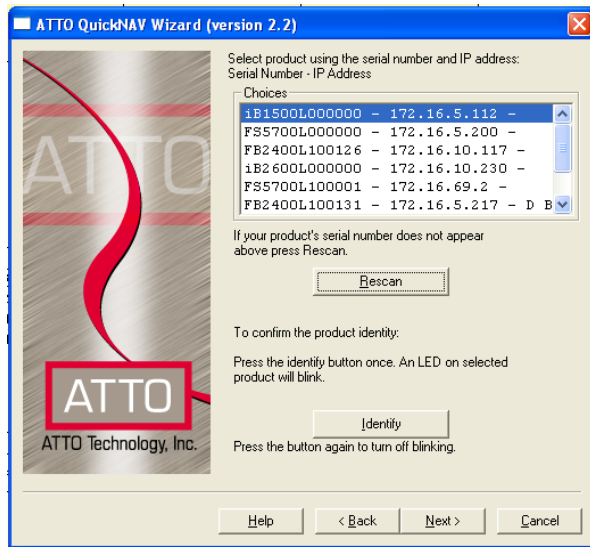
*Exhibit 2 FastStream SC 5300 in split bus attached to a MediaDock II*



- 4 Connect the LC-LC Fibre Channel cables from the FastStream SC 5300 to the Celerity storage adapter.
- 5 Connect the AC power cord from the FastStream SC 5300 to the proper AC source outlet.
- 6 Turn on power to the FastStream SC 5300 using the switch on the back of the appliance.

## Discover the IP address

- 1 Open the **QuickNAV-windows.exe** program found in the **Utilities** directory on the CD supplied with your FastStream SC 5300.
- 2 The ATTO QuickNAV Wizard screen appears. Click **Next**.



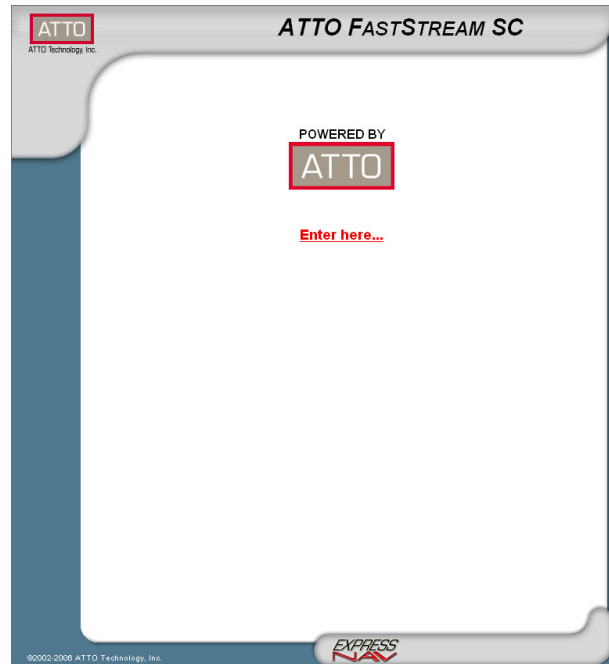
- 3 Highlight the ATTO FastStream SC 5300 serial number. Refer to [Verify the contents of your packing box](#) on page 1.
- 4 Click **Next**.



Note

*If a DHCP server is not available on your network, refer to the Installation and Operation Manual for further instructions.*

- 5 Click on **Launch Browser**. The FastStream SC 5300 GUI initial welcome screen appears.



## Initial configuration



### CAUTION

**Selecting Commit during configuration causes all previous storage data on drives to be erased. Make sure data is backed up.**

- 1 At the initial welcome screen for your ATTO FastStream SC 5300 in your web browser click on **Enter Here**.
- 2 Enter the username and password in the login box. Default values are
  - Username: root
  - Password: Password.Passwords are case sensitive.
- 3 Click **OK**
- 4 At the **Initial Setup** screen, choose the **Avid Digital Video** button.
- 5 Click **Next**



Note

*The FastStream SC 5300 supports configurations of 6, 12 or 24 JBOD drives. The drives should be attached to the FastStream SC 5300 and powered on.*

- 6 All of your drives are displayed graphically on the **ATTO Digital Video Setup Wizard** page. If no drives are present, make sure your drives are powered on and attached to the FastStream SC 5300, then click the **System Scan** button. If you do not see 6, 12 or 24 drives, consult the Installation and Operation Manual.

- 7 Click on **Commit**
- 8 A warning asks to confirm your choice: setting up RAID groups destroys existing data. Select **No** to cancel the setup and return to the initial setup page. Select **Yes** to set up RAID groups. Configuration may take more than two hours.



Note

*Once the initial setup is complete, close your browser and configure the RAID protected storage in your specified operating system.*

*Refer to the **Monitor** page periodically to note system health.*

Set up Phone Home E-mail notification of system problems. Refer to the Installation and Operation Manual for more information.

- 9 The **Health and Status Monitor** page appears.

PC users: continue to [PC Users: Install ATTO Express Power Center](#)

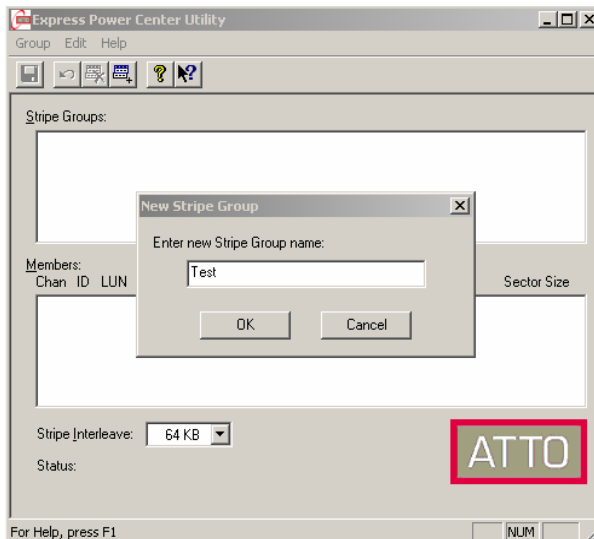
Mac® users: continue to [Mac users: install ATTO ExpressStripe](#).

## PC users: install ATTO Express Power Center



**Note**  
For 6-drive configurations, skip to [Step 14](#) on page 3.

- 1 Open the **Power Center** folder on your setup CD.
- 2 Click on the **ExpressPCI x86.msi** file
- 3 Follow the installation instructions.
- 4 Reboot the computer.
- 5 After the reboot, double click on the **Express Power Center Utility** shortcut on your desktop to start the program.
- 6 Press the **Insert** key on your keyboard and enter the name of the RAID group you want to create.

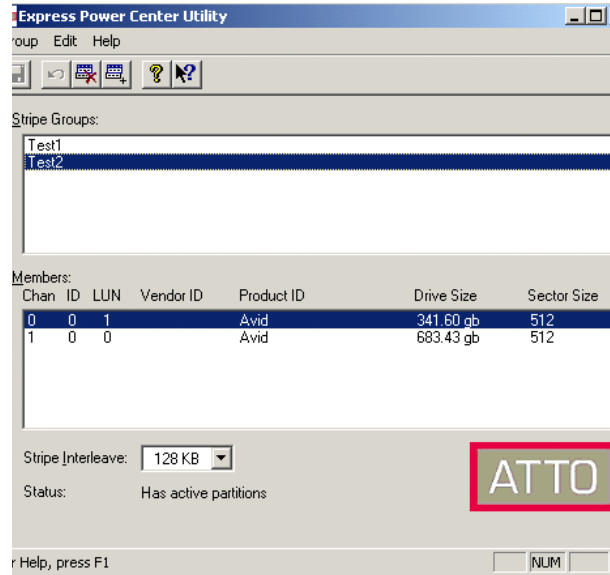


- 7 Press **OK**.



**Note**  
If you are using a single bus configuration, you must create two RAID groups.

- 8 Click on the **Members** pane.



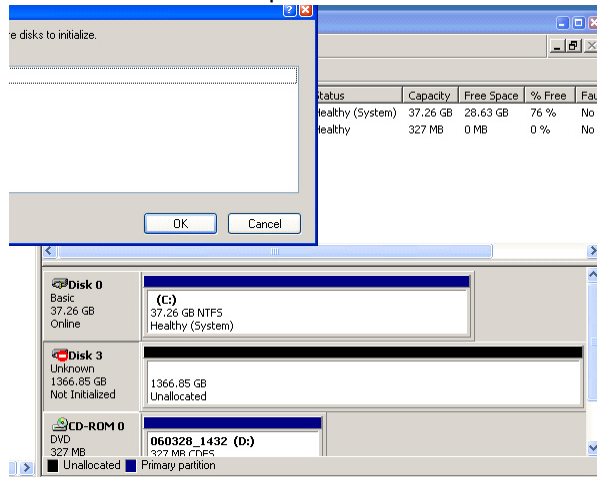
- 9 Press **Insert** on your keyboard.
- 10 Enter 128 KB in the **Stripe Interleave** text box.
- 11 If you have a split bus configuration, select both RAID drives attached to your ATTO FastStream SC 5300.

If you have a single bus configuration with 12 300GB drives or 24 drives, select

- First RAID group:  
Channel 0 ID 0 LUN 0  
Channel 1 ID 0 LUN 0
- Second RAID group:  
Channel 0 ID 0 LUN 1  
Channel 1 ID 0 LUN 1

- 12 Click the disk icon in the upper left hand corner of the program to save the configuration.
- 13 Close the Express Power Center application.
- 14 On the desktop, right click on **My Computer**
- 15 Choose **Manage**.
- 16 The **Computer Management** screen appears. Click on **Disk Management**.

17 Select the new unpartitioned disk.

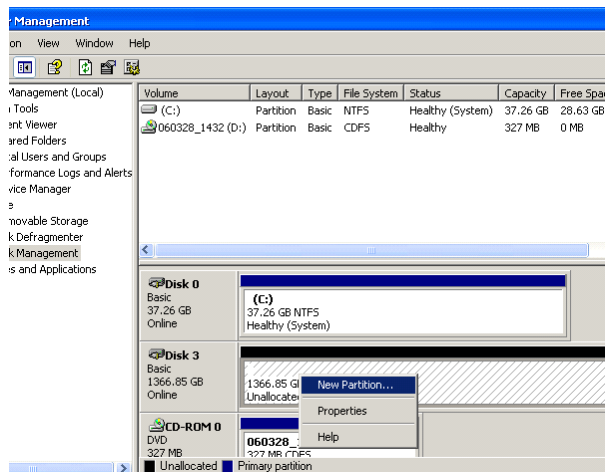


18 Write a basic signature.

19 Right-click the basic volume you just created and format it NTFS just as you would any Windows volume.

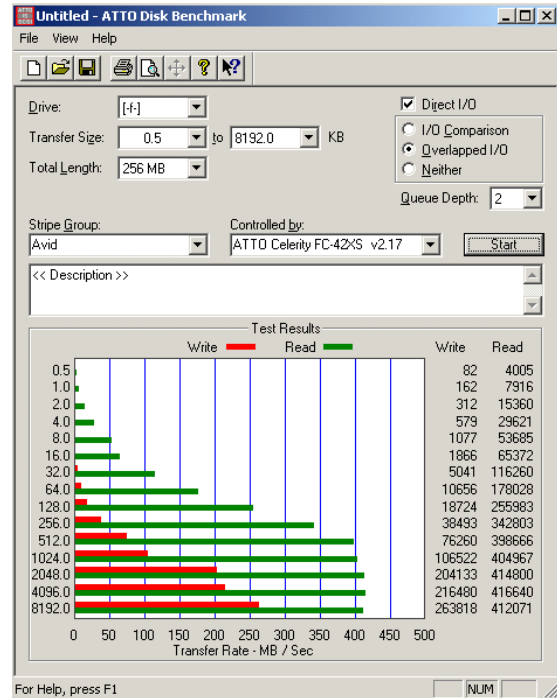


**Note**  
If you have 12 300GB drives or 24 drives, repeat this step because you have two volumes.



20 The setup of your storage is now complete and you may begin using your FastStream SC 5300.

21 To ensure that your ATTO FastStream SC 5300 has been configured properly, run the ATTO Disk Benchmark Tool included on your installation CD.



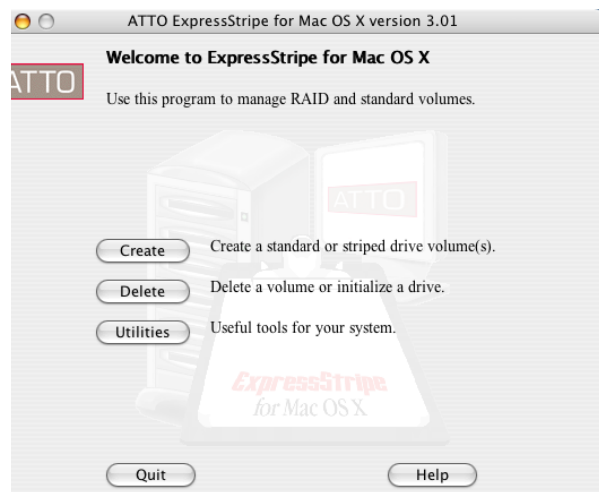
## Mac users: install ATTO ExpressStripe

- 1 Ensure the Celerity storage adapter (42ES or 42SX based on your system) has been installed in your Macintosh
- 2 In the CD included with your ATTO FastStream SC 5300, click on the **Celerity Mac** folder.
- 3 Click on the **Disk Image** file.
- 4 Install the ExpressStripe Application following the installation instructions.

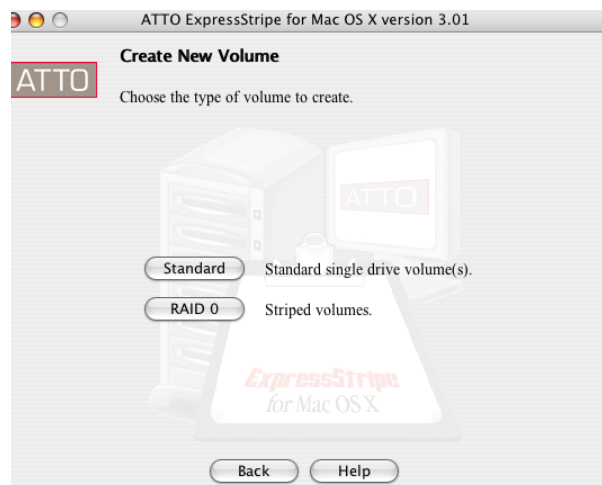
- 5 Reboot your Mac.
- 6 Launch ExpressStripe and enter the following registration information.

**Name:** Your Name  
**Company:** ATTO FastStream SC 5300  
**Serial Number:** 100fb66b  
**Authorization Code:** 27adwdd6q6wb3a72

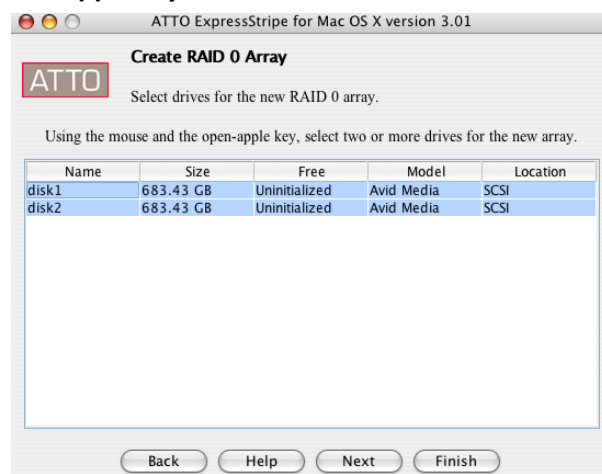
7 Click on the **Create** button.



8 Click on the **RAID 0** button.

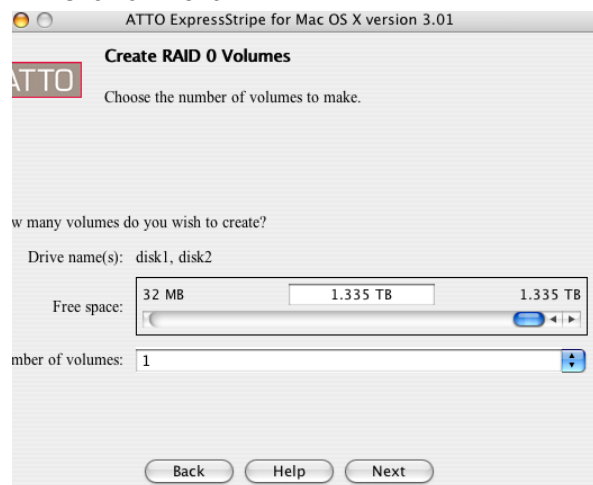


9 Select all drives connected to the ATTO FastStream SC 5300 by clicking the **open Apple key and A**.

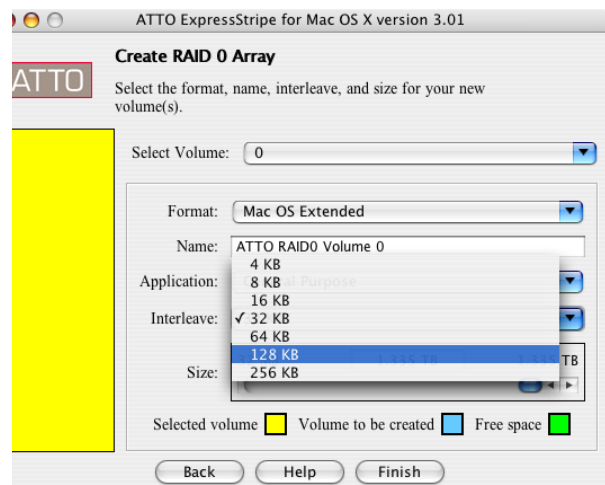


10 Click **Next**.

11 The **Create RAID 0 Volumes** screen appears. Click on **Next**.



12 The **Create RAID 0 Array** screen appears. Change the interleave size to 128KB.



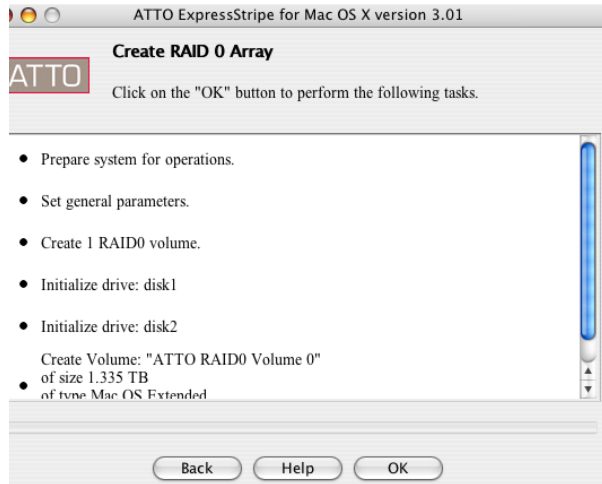
Note

*You may also change the name of the volume on this page*

13 Click **Finish**.

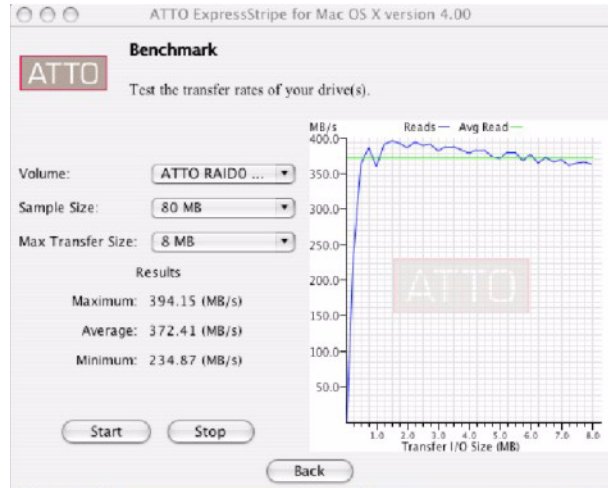
14 On the final screen, click **OK**.

The volume is created and its icon is placed on your Desktop.



- 15 Verify that the volume is on the desktop.
- 16 To ensure that your ATTO FastStream SC 5300 has been configured properly, run the

benchmark utility included in the ExpressStripe application.



- 17 Select **Quit** to exit from ExpressStripe and begin using your FastStream SC 5300.