

## Express Power Center Software

RAID Software Utility for Windows® and Mac OS® X

Express Power Center is a performance-optimizing RAID software utility for Mac or Windows OS environments. When combined with ATTO's high-performance SAS and Fibre Channel host bus adapters, Express Power Center delivers superior RAID 0 performance over the native OS for streaming or transactional applications.

### Out-of-the-Box Performance Boost

Express Power Center provides an immediate and significant performance improvement for users running bandwidth-intensive video streaming, rich-media content creation and post-production applications. With minimal configuration requirements, Express Power Center software delivers up to a 69% performance boost when used with ATTO HBAs, allowing users to finish projects in timely manner and meet critical deadlines.

### Simple and Easy to Use

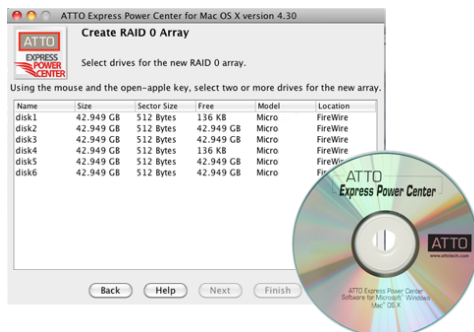
Express Power Center features a simple and intuitive wizard-based GUI that allows users to quickly configure RAID groups and immediately benefit from the performance improvements the software provides. Configuring RAID groups using the native OS can be a difficult and time-consuming activity. Express Power Center software enables users to achieve the highest consistent streaming performance, without spending valuable time configuring and managing RAID groups.

### Optimized for ATTO HBA's

ATTO has an extensive history of providing solutions to users in the media and entertainment market, where performance and bandwidth requirements are key. Express Power Center was developed specifically to enhance the performance capabilities of ATTO's Fibre Channel and SAS/SATA host bus adapters in these applications. With the ability to selectively match interleave sizes with typical disk data transfer requests based on the application, and seamlessly port stripe groups between systems, ATTO's Express Power Center software improves streaming performance.

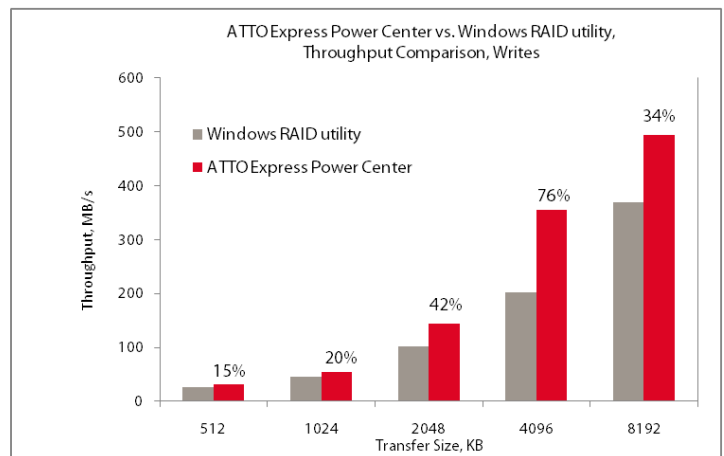
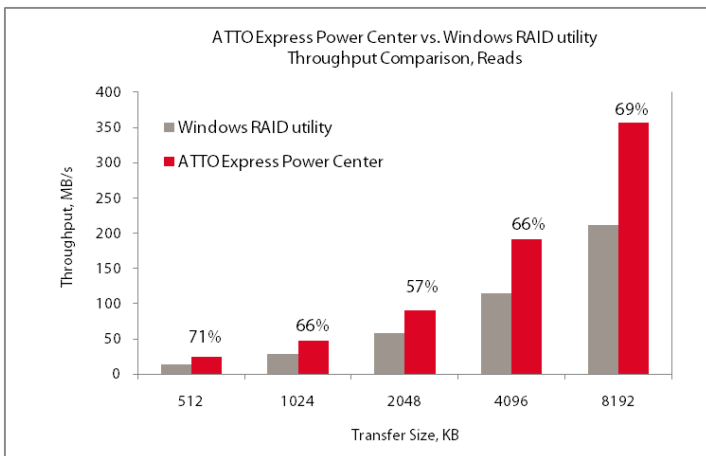
### Technical Highlights

- Out-of-the-box performance improvement over native OS
- Support for Windows® and Mac OS® X environments
- Selectable interleave sizes up to 1MB
- RAID 0 performance optimized specifically for ATTO HBAs
- Simple and intuitive wizard-based GUI
- Seamlessly port stripe groups between systems
- Built-in benchmarking tool



#### Technical Specifications & Benchmark

	For Windows®	For Mac OS® X
<b>Differentiators</b>	Exclusive Smooth Data Optimization (SDO™) for increased Productivity	Benchmark the drive's peak, average and minimum read transfer rates
<b>Additional Features</b>	Seamless portability for stripe groups between systems	Initialize disks and delete volumes
<b>System Requirements</b>	Support for Windows 8, 7, Vista, XP, Server 2012, 2008, 2003	Support for Mac OS X 10.5.x and later
		Create multiple volumes of various sizes simultaneously with support of up to 8 Exabytes
		Journaling support
<b>Applications</b>	<ul style="list-style-type: none"> <li>Support for digital media workgroup and large-scale database solutions. Applications include audio/ video, fixed content, database and other I/O intensive environments requiring RAID 0 functionality</li> </ul>	
<b>Advanced Capabilities</b>	<ul style="list-style-type: none"> <li>Enhances performance of ATTO host adapters</li> <li>Exclusive Smooth Data Optimization for unmatched RAID 0 performance</li> <li>Simple GUI for managing stripe groups</li> <li>User selectable interleave sizes up to 1MB</li> <li>Seamless portability of stripe groups between systems</li> </ul>	
<b>Part Number</b>	<b>EPCI-PWRC-000</b>	



ATTO Technology, Inc.