



ATTO Technology, Inc.

ATTO Storage Controllers for Audio

ATTO's FastStream™ Storage Controller in Audio Production Environments

Features

High Performance RAID Protection

- Specifically designed for audio environments
- Supports RAID levels 0, 1, 5, 10 and ATTO's proprietary DVRAID
- Global hot spare support with automatic rebuild
- Performance in excess of 400 MB/sec.

First Rate Features

- 4-Gb Fibre Channel connectivity to multiple hosts
- Connect storage through 4-Gb Fibre Channel or Ultra320 SCSI
- Simple "one-click" setup and management

Return on Investment

- Use existing Fibre Channel or SCSI storage
- Spend less time setting up and managing storage
- Drive failures no longer mean lost work or downtime
- Fibre Channel connectivity for sharing storage and collaborating on projects

BENEFITS OF RAID PROTECTION

In audio production environments, it is common to find unprotected storage being used for backups. Firewire drives, non-RAID protected SCSI drives and internal ATA drives do not protect data from drive failures, and using these devices require manual backups for adequate data protection. This can result in hours of lost work and lost productivity while the drive is being replaced.

The solution to this problem is RAID protection. In the past, RAID controllers were not fast enough to be used in an audio production environment. ATTO's FastStream™ Storage Controllers provide RAID performance for the most demanding audio projects, while protecting data and allowing for multi-user collaboration. Existing SCSI or Fibre Channel storage can be utilized, saving thousands of dollars by eliminating the need to purchase new storage.

BUILT FOR AUDIO

The ATTO FastStream™ SC 5700 and FastStream™ SC 5300 were specifically designed for streaming audio and video applications. Capable of sustaining hundreds of tracks of high resolution audio, FastStream also facilitates project collaboration through Fibre Channel connectivity. ATTO's FastStream Storage Controllers provide performance that was once thought impossible.

FastStream SC in Audio Environments

- 1 ATTO FastStream™ Storage Controllers allow for a direct connection to two or more hosts with a Fibre Channel switch.
- 2 ATTO FastStream™ Storage Controllers provide high performance RAID protection and are designed for the special demands of digital audio.
- 3 The ATTO FastStream™ SC 5700 provides a direct connection to existing Fibre Channel storage.
- 4 The ATTO FastStream™ SC 5300 provides a direct connection to existing SCSI storage.



ATTO FastStream™ SC 5700C/R/D Appliance

High Performance

- Two independent 4-Gb Fibre Channel ports for host connectivity
- Two independent 4-Gb Fibre Channel ports for storage connectivity
- Features ATTO's intelligent Bridging Architecture™ for optimal performance

Easy to Use

- Easy web-based administration
- Simple setup and configuration
- RAID migration and storage expansion
- Auto negotiates to 4 / 2 / 1-Gb Fibre Channel



ATTO FastStream™ SC 5300C/R/D Appliance

High Performance

- Two independent 4-Gb Fibre Channel ports for host connectivity
- Two independent Ultra320 SCSI ports for storage connectivity
- Features ATTO's intelligent Bridging Architecture™ for optimal performance

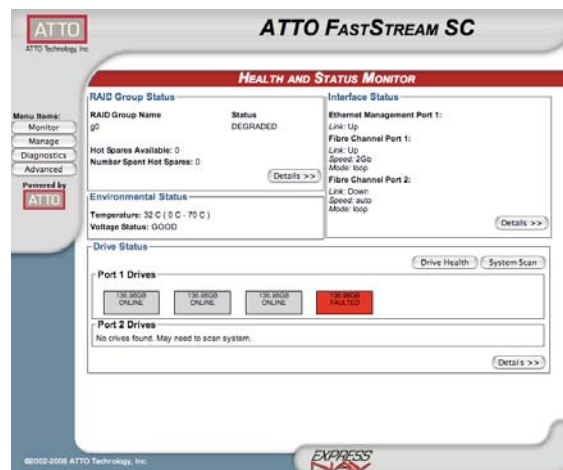
Easy to Use

- Easy web-based administration
- Simple setup and configuration
- RAID migration and storage expansion
- Auto negotiates to 4 / 2 / 1-Gb Fibre Channel

GROUND-BREAKING EASE OF USE

ATTO FastStream™ Storage Controllers are designed to be user-friendly, without sacrificing power or flexibility. Simply connect an optical cable to one of the 4-Gigabit Fibre Channel ports, then connect the other end to one of the ports on an ATTO Fibre Channel host adapter installed in the editing workstation. Finally, connect either SCSI storage or Fibre Channel storage to the FastStream Storage Controller and use the ATTO ExpressNav™ utility to quickly locate and manage the controller.

FastStream allows changes from one RAID type to another or adding storage without having to delete data. Simply add new storage and tell the FastStream to grow the partition or change the RAID type. Because there is no need to restore data after this change, valuable production downtime is kept to a minimum.



ATTO's FastStream™ SC 5700 and FastStream™ SC 5300 Storage Controllers provide extensive diagnostic and management tools.

POWER BEHIND THE STORAGE

ATTO FastStream Storage Controllers easily add RAID protection to existing SCSI or Fibre Channel storage. With two high-performance 4-Gigabit Fibre Channel ports, multiple editing workstations can be connected to allow for easy collaboration and access to projects from any workstation in a studio. Global hot spares mean never having to worry about a drive failure causing loss of data or halting production. With simple RAID migration and partition expansion, RAID levels can be changed or storage can be added without needing to copy data, resulting in minimal downtime. Because existing storage is used, the cost is significantly lowered. ATTO FastStream Storage Controllers provide great protection at a minimal cost

Please visit: <http://www.attotech.com> for more information or to purchase.