

ATTO FastFrame AIR NICs: Sustained Performance for Limited-Airflow Workstations

Precision Thermal Management Keeps Ethernet Reliable Where Others Fail

The Challenge

As Ethernet speeds scale to 25, 50, and 100GbE, thermal output from high-performance NICs has increased significantly across the industry. Higher data rates, denser silicon, and optical transceivers all contribute to elevated operating temperatures.

In data center environments, this is addressed through high-volume airflow and engineered cooling. However, many professional workstation environments—including media and entertainment, CAD/CAM, medical imaging, and AI development—operate with limited airflow and strict acoustic constraints.

Therefore, the challenge has been that high-performance NICs can exceed optimal thermal ranges, increasing the risk of:

- Thermal throttling or system shutdown
- Reduced performance consistency
- Component stress and premature failure

The Constraint

Traditional mitigation strategies mostly rely on increasing system fan speeds. While partially effective, this approach introduces two critical limitations:

- **Acoustic Impact:** Elevated fan speeds generate unacceptable noise in professional environments
- **Cooling Inefficiency:** Workstation chassis are not designed to match data center airflow levels

In practical terms, simply increasing airflow in a workstation chassis is not a viable or scalable solution.

The Solution: ATTO FastFrame™ AIR

FastFrame AIR addresses NIC-level thermal challenges through an integrated, hardware-based cooling approach.

Available models:

- N422-AIR (10/25GbE)
- N412-AIR (50/100GbE)

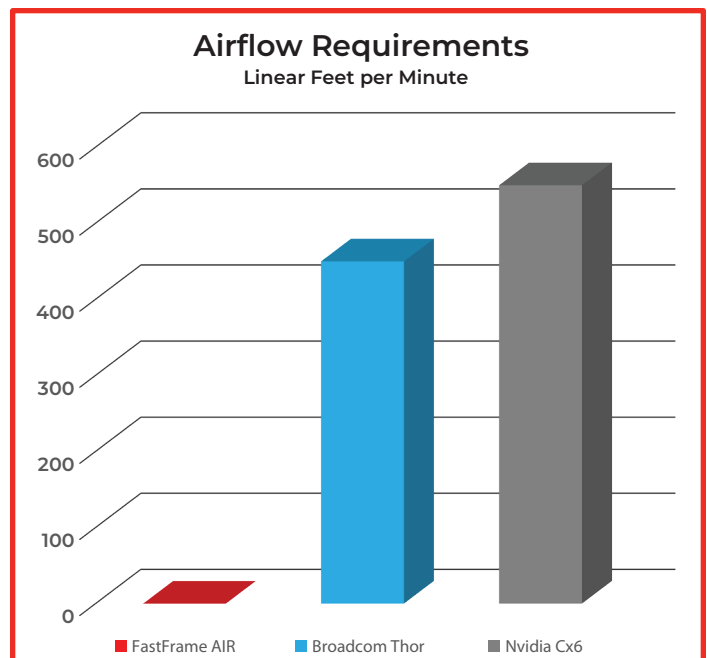
Each adapter incorporates:

- An integrated heat baffle
- An onboard blower system

This design actively directs heat away from the NIC and out of the system, reducing thermal buildup at the source without increasing system fan speeds or overall noise.



ATTO FastFrame N422-AIR 10/25GbE NIC with advanced heat baffling technology.



FastFrame AIR has no airflow requirements to operate safely while both NVIDIA® ConnectX®-6 (550 lfm) and Broadcom Thor (400 lfm) need a significant cooling environment or they will overheat and crash, resulting in expensive downtime.

Proven Thermal and Performance Results

Thermal performance was evaluated under sustained, full line-rate operation within a workstation environment.

Test Configuration:

- Competitor vs. FastFrame AIR
- Identical system and workload

Results:

- Standard adapter temperature: **83°C**
- FastFrame AIR temperature: **51°C**

Delta: 32°C reduction

The Impact of ATTO AIR

This thermal reduction directly translates into:

- Sustained performance at line rate
- Reduced risk of thermal throttling
- Improved system stability under load
- Lower thermal stress across adjacent components

Thermal imaging confirms that, without active heat redirection, excess heat from standard adapters remains trapped within the chassis—impacting overall system behavior.

ATTO360™ Networking

When managed by ATTO360 Networking, FastFrame AIR adapters deliver a fully integrated and optimized solution for performance-critical environments.

ATTO360 provides real-time visibility into network performance, enabling users to identify bottlenecks, monitor adapter health, and maintain consistent throughput under sustained workloads.

Together, FastFrame AIR and ATTO360 Networking create a streamlined, high-performance ecosystem—ensuring reliable Ethernet operation in constrained workstation environments.

Summary

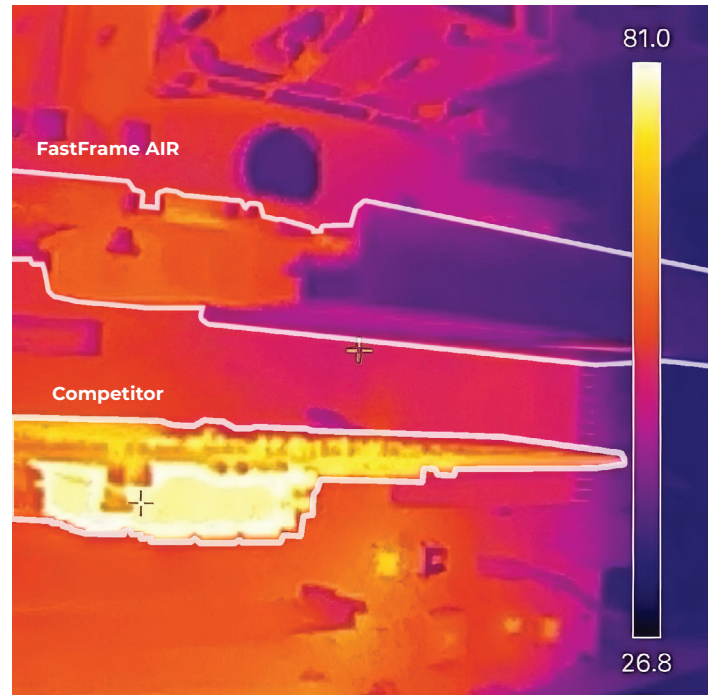
High-speed Ethernet introduces thermal demands that exceed the cooling capabilities of many workstation-class systems.

FastFrame AIR resolves this challenge at the source—enabling full-performance operation in environments where airflow and acoustics are constrained.

The result: predictable, high-performance connectivity without compromise.



ATTO FastFrame AIR pictured installed in a workstation PCIe slot above a competing NIC. With the AIR baffling technology the FastFrame AIR NIC is half-height, 3/4 length, fitting inside most workstation and server chassis.



Thermal image showing the installation above: an ATTO FastFrame AIR installed in a workstation PCIe slot above a competing NIC. Thermal readings clearly show the FastFrame AIR device generates nearly half the heat of the standard NIC.

Learn more about ATTO FastFrame AIR NICs:
[ATTO FastFrame High Performance Ethernet](#)