

About ATTO

For over 30 years, ATTO Technology, has been a global leader across the IT and media & entertainment markets, specializing in network and storage connectivity and infrastructure solutions for the most data-intensive computing environments. ATTO works with partners to deliver end-to-end solutions to better store, manage and deliver data.

All trademarks, trade names, service marks and logos referenced herein belong to their respective companies.

About Dell EMC

EMC is a global leader in enabling businesses and service providers to transform their operations and deliver information technology as a service (ITaaS). Fundamental to this transformation is cloud computing. Through innovative products and services, EMC accelerates the journey to cloud computing, helping IT departments to store, manage, protect and analyze their most valuable asset — information — in a more agile, trusted and cost-efficient way.

Connecting Workstations to Dell EMC Isilon Storage using ATTO FastFrame® and ThunderLink® Push your Network Storage to New Limits

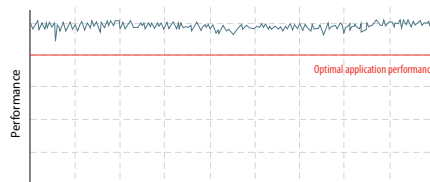
Specialized, compute intensive applications used for media & entertainment, manufacturing & design, oil & gas, game development, imaging or healthcare require workstations outfitted with powerful graphics, processors and memory. When using Scale-Out Network Attached Storage (NAS) like EMC Isilon, the high bandwidth, low latency benefits of the ATTO FastFrame™ NICs and ThunderLink® adapters are a must have.

ATTO Technology, Inc. has been developing high performance, low latency storage and network connectivity solutions for the most demanding workflows for over 30 years. ATTO 40GbE and 10GbE FastFrame NICs and ThunderLink Thunderbolt™ to Ethernet adapters are designed to meet the ever growing performance needs of a scalable scale-out network storage environment.

ATTO Products feature:

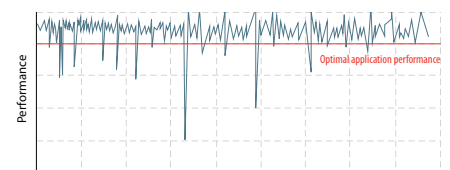
- ATTO Advanced Data Streaming (ADS™) Technology for controlled latency and acceleration of data.
- ATTO FastFrame NICs have been tested and tuned for interoperability and performance with Isilon Scale-Out NAS and in conjunction with the latest in workstation technology by industry leading vendors.
- ATTO ThunderLink Thunderbolt™ to Ethernet adapters have been tested and tuned for interoperability and performance with Isilon Scale-Out NAS with the latest Thunderbolt enabled mobile workstations and All-in-Ones.
- ATTO develops and optimizes drivers for workstation operating systems providing the maximum throughput for today's most demanding applications.
- Working with Dell EMC Isilon, ATTO has developed performance optimizations that take advantage of the latest features deployed in the OneFS filesystem.

ATTO Products with ADS Technology



Data transfer performance is smooth and reliable

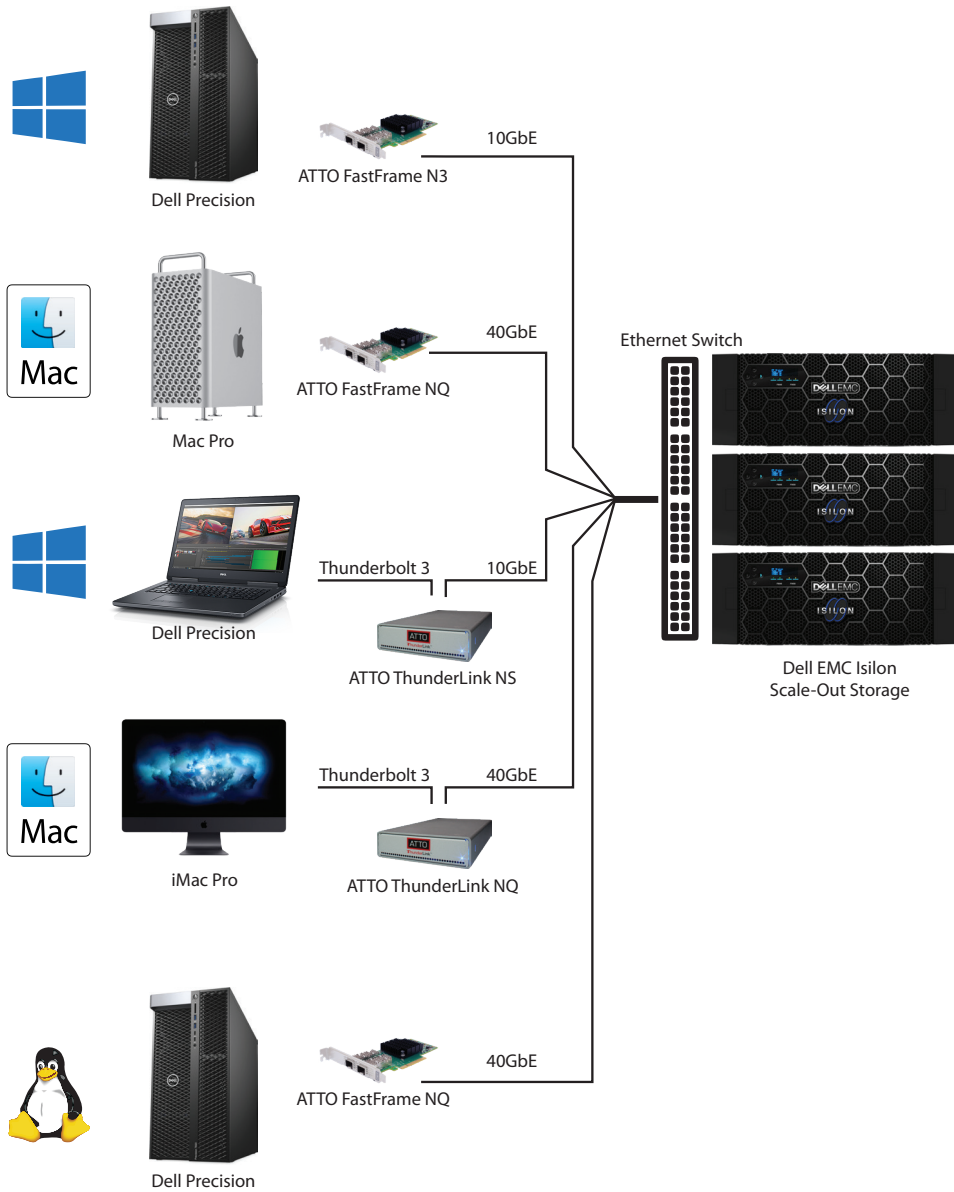
Competitor's Product



Disrupted transfer with peaks and drops

Transfer rate dips below optimal performance levels





Dell EMC Isilon

- Isilon F800
- Isilon H600



ATTO FastFrame™

- FFRM NQ42- Dual Port 40GbE
- FFRM NS/NT12 – Dual Port 10Gb Ethernet NIC (SFP+/RJ45)
- FFRM NS11 – Single Port 10Gb Ethernet NIC (SFP+)



ATTO ThunderLink®

- TLNQ 3402 – Thunderbolt 3 to Dual Port 40Gb Ethernet
- TLN3 3102 – Thunderbolt 3 to Dual Port 10Gb Ethernet



Supported Operating Systems

- Windows®
- RedHat® Linux® 7.2/7.0
- Ubuntu 14.04 sp1
- macOS®

How to buy

Available through Dell S&P

ATTO SKU	DELL SKU
TLNQ-3402-D00	A9768584
TLN3-3102-D00	A9768581

FFRM-NQ42-D00	A9735161
FFRM-NS12-D00	A8511201
FFRM-NT12-D00	A9735136

Dell Sales	1.800.456.3355
ATTO Sales	1.716.691.1999

ATTO Adapter	Iperf Rx	Iperf Tx	SMB READS	SMB WRITES
FFRM NQ42	1800 MB/sec	3600 MB/sec	2330 MB/sec ¹	1400 MB/sec ¹
FFRM NS12	1150 MB/sec	860 MB/sec	1050 MB/sec ¹	750 MB/sec ¹
TLNQ 3402	2650 MB/sec	2100 MB/sec	2410 MB/sec ¹	2000 MB/sec ²

¹ = Read tests run with AJA System Test in macOS® 10.13.3

² = Write tests running using AJA in macOS 10.13.3

³ = Read and write tests run with AJA System Test in macOS 10.13.3

⁴ = Read and write tests run using AJA in Windows 10



The Power Behind the Storage

03/17/20

+1.716.691.1999 | attocom

ATTO